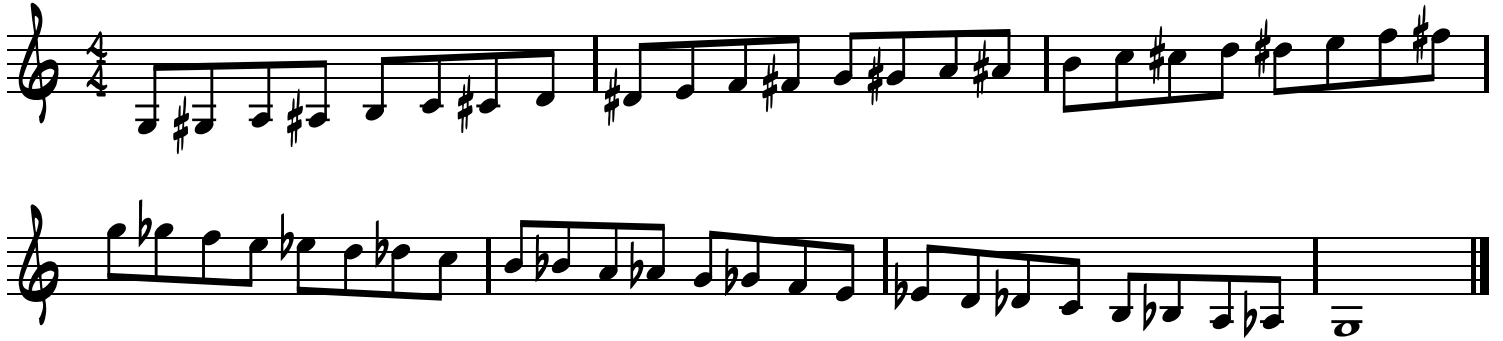


MRJH Jazz Band Audition

trumpet

Part 1: Concert F Chromatic Scale (play at an even tempo)



Part 2: Jazz Etudes (watch the tempo markings; not all of these may be used at the audition)

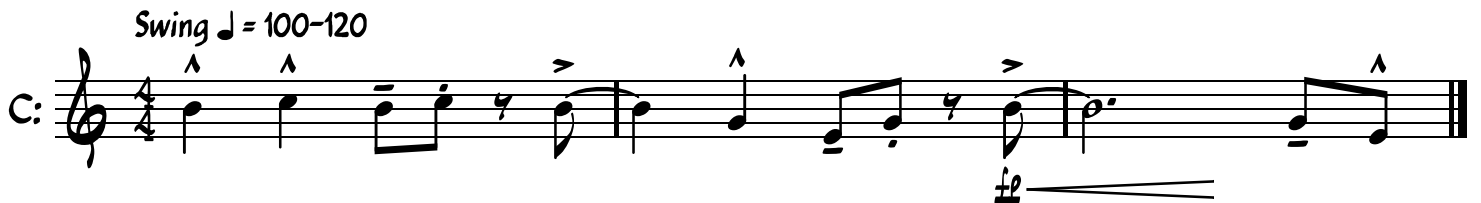
A: *Swing* ♩ = 110-130



B: *Swing* ♩ = 120-140



C: *Swing* ♩ = 100-120



D: *Swing* ♩ = 70-90



E: *Swing* ♩ = 130-150



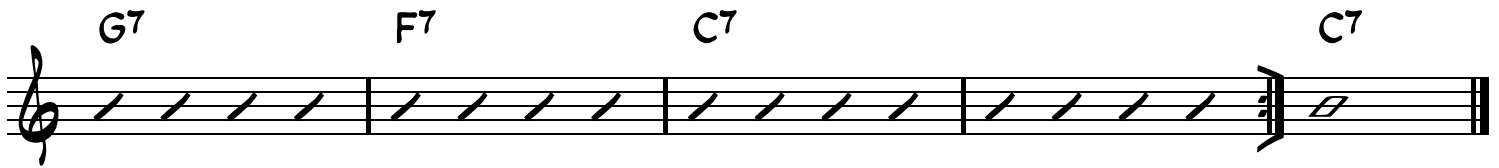
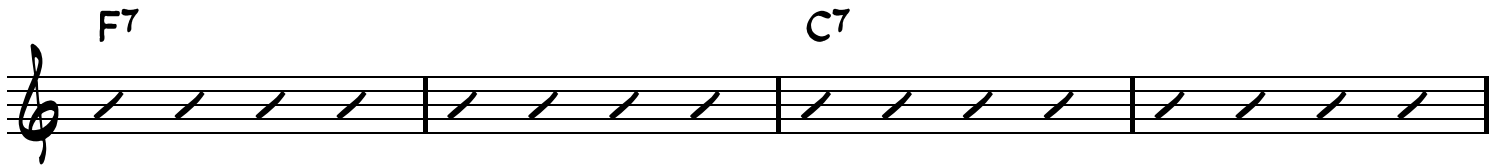
See the reverse side of this page for part 3.

Part 3: Improvisation (optional)

Swing (♩=116-120)

C7

on the band website (mrjhbands.org) is a recording of a rhythm section backing track for practicing improvisation.



Improvisation Help:

Use the notes from this scale to create an improvised solo:



Or use the notes from these scales corresponding to the chord symbols:

