

# MRJH Jazz Band Audition

tenor sax

## Part 1: Concert F Chromatic Scale (play at an even tempo)

Musical notation for Part 1: Concert F Chromatic Scale. The piece is in 4/4 time and consists of two staves. The first staff begins with a whole rest, followed by an ascending chromatic scale from F4 to F5. The second staff continues the descending chromatic scale from F5 to F4, ending with a whole rest.

## Part 2: Jazz Etudes (watch the tempo markings; not all of these may be used at the audition)

Musical notation for Part 2: Jazz Etudes. The piece consists of five staves of music, each with a tempo marking and a 4/4 time signature.

- A: *Swing* ♩ = 110-130
- B: *Swing* ♩ = 120-140
- C: *Swing* ♩ = 100-120
- D: *Swing* ♩ = 70-90
- E: *Swing* ♩ = 130-150

See the reverse side of this page for part 3.

Part 3: Improvisation (optional)

Swing (♩=116-120)

C7

on the band website ([mrjhbands.org](http://mrjhbands.org)) is a recording of a rhythm section backing track for practicing improvisation.



F7

C7

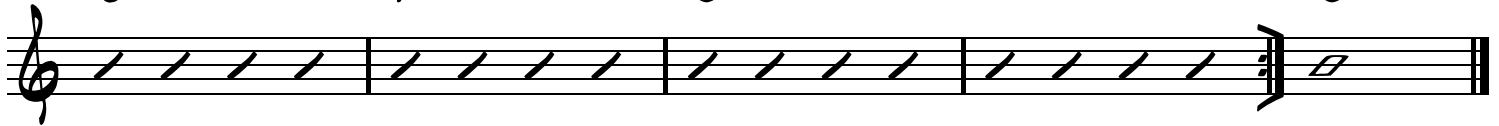


G7

F7

C7

C7



Improvisation Help:

Use the notes from this scale to create an improvised solo:



Or use the notes from these scales corresponding to the chord symbols:

