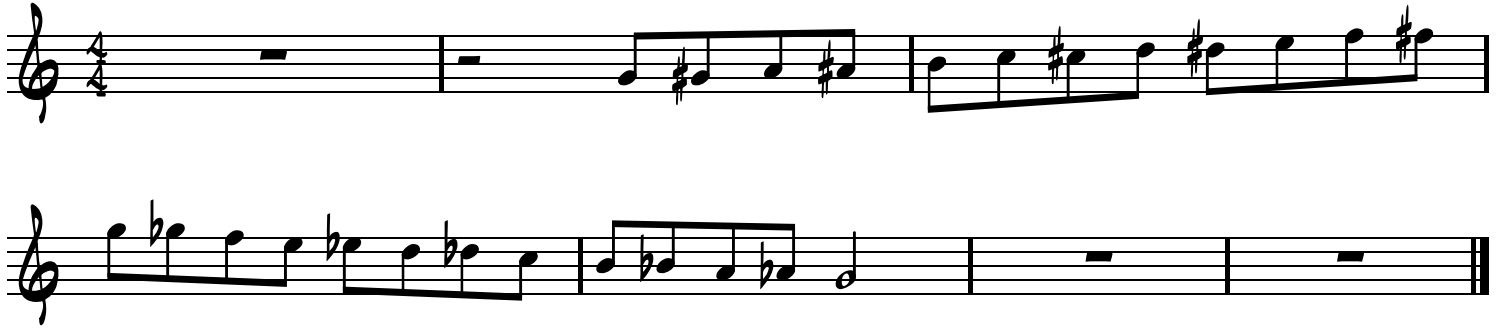


MRJH Jazz Band Audition

tenor sax

Part 1: Concert F Chromatic Scale (play at an even tempo)




Part 2: Jazz Etudes (watch the tempo markings; not all of these may be used at the audition)

Swing ♩ = 120-140

A: 

Swing ♩ = 120-130

B: 

Swing ♩ = 90-100

C: 

Swing ♩ = 100-120

D: 

Swing ♩ = 100-110

E: 

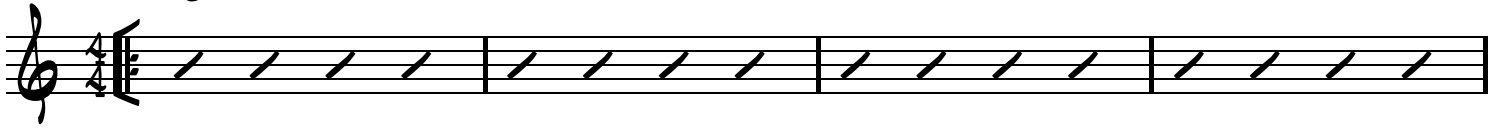
See the reverse side of this page for part 3.

Part 3: Improvisation (optional)

Swing (♩=116-120)

on the band website (mrjhbands.org) is a recording of a rhythm section backing track for practicing improvisation.

C7



F7

C7



G7

F7

C7

C7



Improvisation Help:

Use the notes from this scale to create an improvised solo:



Or use the notes from these scales corresponding to the chord symbols:

